

Vital^{CDC}signs™

3,500

There are about 3,500 sleep-related deaths among US babies each year.

1 in 5

22% of mothers reported not placing their baby on his or her back to sleep, as recommended.

2 in 5

39% of mothers reported using soft bedding (not recommended) when placing babies to sleep.



Safe Sleep for Babies

Eliminating hazards

There have been dramatic improvements in reducing baby deaths during sleep since the 1990s, when recommendations were introduced to place babies on their back for sleep. However, since the late 1990s, declines have slowed. Other recommended safe sleep practices today include eliminating hazards, such as keeping blankets, pillows, bumper pads, and soft toys out of the sleep area. Recommendations also include room sharing but not bed sharing. These practices can help lower the risk of sleep-related infant deaths, including sudden infant death syndrome (SIDS), accidental suffocation, and deaths from unknown causes. Not all caregivers follow these recommendations. Healthcare providers can counsel caregivers on safe sleep practices during pregnancy and baby care visits.

Healthcare providers can:

- Advise caregivers to place babies on their back for every sleep. Keep soft bedding such as blankets, pillows, bumper pads, and soft toys out of their baby's sleep area, and room share but not bed share with babies.
- Ask caregivers about how they place the baby to sleep, challenges to following recommendations, and help them find solutions.
- Model safe sleep practices in hospitals.
- Follow the latest recommendations from the American Academy of Pediatrics for safe sleep.
<http://bit.ly/2mwoaGV>



Want to learn more?

Visit: www.cdc.gov/vitalsigns



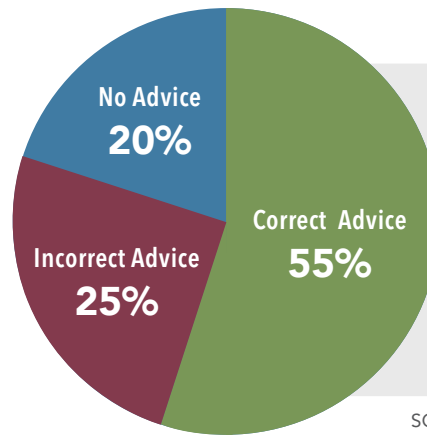
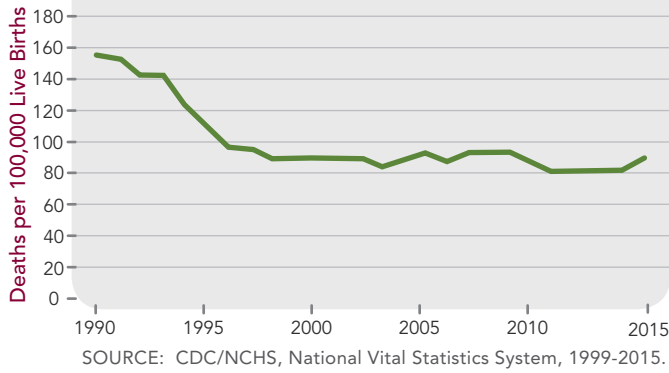
**Centers for Disease
Control and Prevention**
National Center for Chronic
Disease Prevention and
Health Promotion



PROBLEM:

Every year, there are thousands of sleep-related deaths among babies.

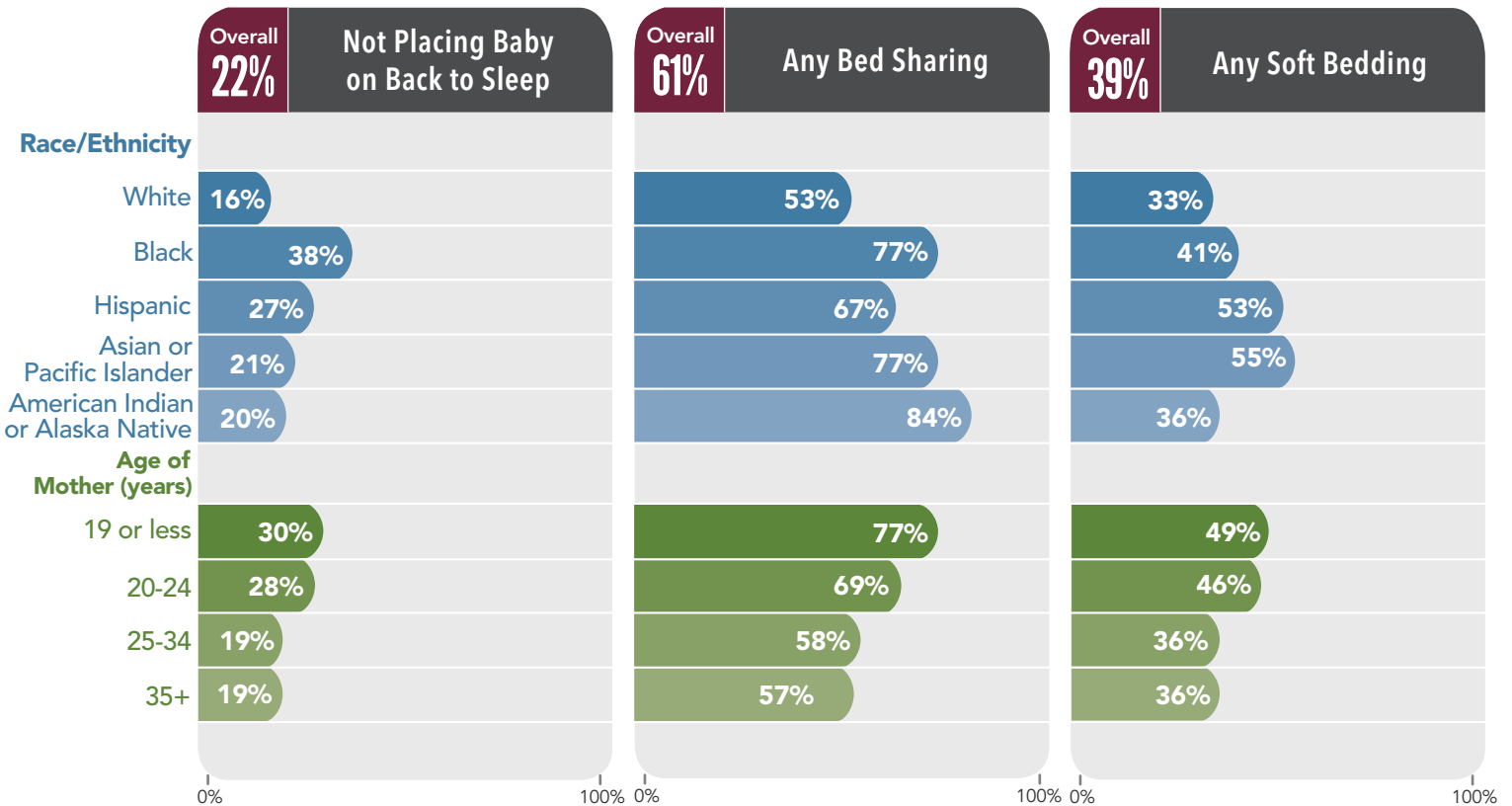
The decline in sleep-related infant deaths has slowed since the late 1990s.



Nearly half of caregivers did not receive correct advice on safe sleep practices from healthcare providers. Caregivers who received correct advice were less likely to place their babies to sleep on their stomach or side.

SOURCE: Pediatrics, September 2017.

UNSAFE SLEEP PRACTICES WITH BABIES ARE COMMON.



SOURCE: Pregnancy Risk Assessment Monitoring System (PRAMS), 2015.

4 TIPS

FOR PARENTS AND
CAREGIVERS TO HELP
BABY SLEEP SAFELY



Place your baby on his or her back for all sleep times - naps and at night.



Use a firm sleep surface, such as a mattress in a safety-approved crib.



Keep soft bedding such as blankets, pillows, bumper pads, and soft toys out of baby's sleep area.



Have baby share your room, not your bed.

WHAT CAN BE DONE

THE FEDERAL GOVERNMENT IS:

- Promoting safe sleep recommendations from the American Academy of Pediatrics.
<http://bit.ly/2mwoaGV>
- Monitoring the use of safe sleep practices.
- Supporting educational campaigns, such as the Safe to Sleep® campaign.
<http://bit.ly/2AZh9Bn>
- Supporting research to better understand sleep-related deaths and strategies to improve safe sleep practices.

HEALTHCARE PROVIDERS CAN:

- Advise caregivers to place babies on their back for every sleep. Keep soft bedding such as blankets, pillows, bumper pads, and soft toys out of their baby's sleep area, and room share but not bed share with babies.
- Ask caregivers about how they place their baby to sleep, challenges to following recommendations, and help them find solutions.
- Model safe sleep practices in hospitals.
- Follow the latest recommendations from the American Academy of Pediatrics for safe sleep.



STATE AND LOCAL HEALTH DEPARTMENTS ARE:

- Improving safe sleep practices in child-care and hospital settings by training providers.
- Using the Special Supplemental Nutrition Program for Women, Infants, and Children (WIC) and other programs that serve mothers and babies to deliver culturally appropriate messaging about safe sleep for babies.
- Monitoring and evaluating safe sleep campaigns and programs.

CAREGIVERS CAN:

- Place babies on their back for every sleep.
- Room share, but not bed share with babies.
- Keep soft bedding such as blankets, pillows, bumper pads, and soft toys out of their baby's sleep area.
- Learn about safe sleep practices for your baby and talk to your healthcare provider.
<http://bit.ly/1LVisPW>



www.cdc.gov/vitalsigns/safesleep
www.cdc.gov/mmwr

For more information, please contact

Telephone: 1-800-CDC-INFO (232-4636)
TTY: 1-888-232-6348 | Web: www.cdc.gov

Centers for Disease Control and Prevention
1600 Clifton Road NE, Atlanta, GA 30333

Publication date: January 9, 2018